



A Window into Somerton PS

Principal (Relieving): Mrs Shynyn Worley
Administration Manager: Michelle Fritze
Phone: 67697 520 **Fax:** 6769 7400
Email: somerton-p.school@det.nsw.edu.au

School Leaders: Tiara Markwick, Ben Gardner & Tiarna Harrison
Website: www.somerton-p.schools.nsw.edu.au

Term 2 Week 4

Quality teaching and learning, excellent facilities and enriching programs.

| School Week | MONDAY | TUESDAY | WEDNESDAY | THURSDAY | FRIDAY |
|-----------------------------|--|--------------|----------------------------|-----------------------------|---------------------------------------|
| WEEK 4 May | 11 Assembly 3:00pm PLPs | 12 NAPLAN | 13 NAPLAN Play Group | 14 NAPLAN | 15 Cooking Along with Jamie Oliver |
| WEEK 5 May | 18 Assembly 3:00pm 3:30pm-NAIDOC Meeting | 19 | 20 | 21 6:30pm P&C Meeting | 22 |
| WEEK 6 May | 25 Assembly 3:00pm | 26 | 27 Delicious Dinner | 28 | 29 |

Dear Parents and Carers,

I hope all of our mothers had awoken to a chocolate treat on Sunday morning and enjoyed being spoilt by their children on such a special Mother's Day.

High Achievements

Last Friday our students performed extremely well at the Small School's Cross Country. All the hard training has paid off with most students receiving a blue ribbon. Congratulations to Deamon, Nika & Shannon for winning their overall age races. I am extremely proud of all our students for displaying persistence, resilience and sportsmanship during the event. Our students represented themselves and their school with pride. What a proud moment for all! Thank you to our staff, Mrs Markwick and Mrs Hook for assisting the students to travel to and from the event. Your support is greatly appreciated.



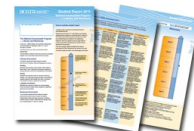
Winter Uniform

The official date all students must be wearing winter uniform is Monday 11th May. If you need assistance with uniforms please contact the school.

NAPLAN

This week our students in year 3 & 5 will sit the NAPLAN tests from 12th May-14th May.

The National Assessment Program – Literacy and Numeracy (NAPLAN) is an annual assessment for students in Years 3, 5, 7 and 9. It has been an everyday part of the school calendar since 2008.



It is important to remember that NAPLAN tests are not pass/fail tests. At the classroom level it is one of a number of important tools used by teachers to measure student progress.

NAPLAN tests skills in literacy and numeracy that are developed over time through the school curriculum. Schools will receive NAPLAN reports for their students from around mid-September, and parents will receive a comprehensive NAPLAN student report for their child. The best ways parents can help support their children in NAPLAN are:

Ensure they have regular attendance at school (from K-12)

A good nights sleep. (Research indicates the growing brain requires at least 10hours sleep per night)

A healthy nutritious breakfast.

School Plan

The School Plan 2015-2017 outlines our 3 strategic directions ~ **Achievement for all in Literacy and Numeracy, Outstanding Teaching and Learning and Community Partnerships.**



Our strategic directions:

- ☐ Define the key developments which are required for the school to achieve excellence
- ☐ Represent a high level and 21st Century learning with educational priority which is evidence based and data informed.
- ☐ Are workable statements that drive the development of the school's educational and organisational learning culture
- ☐ Make explicit links to the aspects of the school excellence framework.

The full school plan document can now be downloaded from our website.

Parent volunteers

Parent volunteers are always welcome at Somerton Public School. If you are able to help in a classroom, kitchen, garden or reading please come in and chat to the class teacher.

Students enjoy having parents or family in the school to see their achievements and be a part of their progress.

Parents Helping Children



Books in Homes

At Somerton School we value reading quality books and the new books have arrived. Our students were very privileged to select two new books that they liked to take home and keep forever. They must either read the books or have someone read the books to them.

Enjoy!



Road Safety Reminder

The best way to protect your children near traffic is to hold their hands. Young children do not make effective use of their hearing and vision, and lack the skills to make safe decisions when in the road traffic environment.

More tips at www.kidsandtraffic.mq.edu.au



NAIDOC meeting

Our planning meeting is on Monday 18th May in the staff room commencing at 3:30pm. All parents, carers and interested community members are welcome to attend our meeting to plan for our NAIDOC week activities held in Week 10. A light afternoon tea will be provided.



P&C



A big thank you to the P & C for organising the Mother's Day raffle. The Prize winners were: 1st Prize—Les Clegg; 2nd Prize—The Hooks; 3rd Prize—Lonnie Gardner. Congratulations!

The next P&C meeting is on 21st May @ 6:30pm in our Staff room. All parents, carers and community members are encouraged and welcomed to attend.

Connecting with Schools

At Somerton School we like to make connections and form networks to learn new skills. We will be traveling to Gunnedah South School to cook in their student friendly kitchen (date TBA). We will bring back our new skills and on **Wednesday 27th May** we will be cooking a 'Delicious Dinner' for our parents, carers and community friends. Please keep this date available for an invitation- coming soon.



Kind regards,

Shayn Worley

Principal (Relieving)

Important Information



Book Club

Book Club went home last week.

Issue 3, 2015 orders & payment must be returned to school by **Friday 29th May 2015** in an envelope with your child's name clearly marked on it. This month is "Read More in May Month", a reading log for May has gone home with each student. You have a chance to win \$250 worth of book vouchers.



Life Education Van Payments

Please remember to send in your Life Education Van payments.

For Sale

John Deere Ride-on Lawn Mower (second-hand) is available for purchase from the school. To make an offer and find out more information please contact the school on Tuesdays or Fridays.

Small School Art Show

Our students will be entering artworks in to the Small School Art show held at Currabubula School on Saturday 23rd & Sunday 24th May, 2015. You are welcome to visit the art show. It is a lovely day out!

Somerton Playgroup

Somerton Playgroup starts TOMORROW! @ the school (9:30am-11:00am). Please see attached flyer.

Community Movie Night

Please see attached flyer.

Some more Pics from the Cross Country Carnival @ Moonbi PS...



NSW Aboriginal Education Consultative Group Inc.

- Are you an Aboriginal parent or carer?
- Would you like to have a say in local Aboriginal Education?
- Do you understand what is happening in our local schools?
- Are you an Aboriginal community member who can help achieve educational outcomes?

**Come along and join your local AECG and have a voice in education.
Your voice is important for our kids.**



NEW SOUTH WALES
AECG
INCORPORATED

Next Meeting:

Thursday 7th May at 4pm
Gunnedah South Public School
Light afternoon tea provided

For further information and membership details please contact:

Gwen Griffen (President) at Min Min Aboriginal Corporation on (02) 6742 4121
Meleah Walters (Secretary) at Gunnedah South Public School on (02) 6742 1899

PLAYGROUP

at

SOMERTON PUBLIC



TIME: 9:30am—11.00am

DATES: WEDNESDAY 13th May

WEDNESDAY 3RD JUNE

WEDNESDAY 17th JUNE

WEDNESDAY 1st JULY

WEDNESDAY 15th JULY

Please bring appropriate food to share for morning tea.





JOIN YOUR P&C ASSOCIATION BE THE CHANGE YOUR CHILD DESERVES



Public Schools continue to provide excellent and inclusive education in a way that directly reflects and influences the community. P&C Associations reflect the role of the community in the local school and provide opportunities to enjoy, learn and communicate with parents and others interested in the education of children.

What is a P&C Association?

A Parents and Citizens' Association (P&C Association) is a school-based organisation consisting of parents, teachers and interested citizens. P&C Associations exist in almost in almost every Public School in NSW. They are created to bring the school and the community into close cooperation.

Parent-school organisations have existed for 150 years in one form or another. They are a great tradition and have long been recognised by Act of Parliament as the representative voice of parents with children in Public Schools. They are supported at state level by the Federation of Parents and Citizens Associations of NSW and nationally by the Australian Council of State School Organisations.

Whether it is called a P&C Association or any other name, the parent-school groups play a vital role in:

- Facilitating cooperation between the students, teachers and community;
- Providing facilities and equipment for the school;
- Encouraging parent participation in curriculum and other education issues;
- Sharing information to benefit the school community;
- Advocating for local educational improvements; and
- Promoting Public Education.

The reason P&C Associations have continued to thrive in Public Schools is because parents have seen how joining the P&C Association at their school makes a significant difference to educational outcomes.

Why should I join the P&C Association?

Recent research has shown that the vital ingredient for student's engagement and learning is parental participation (Epstein, Henderson)

Schooling is a complex process and student disengagement from learning is happening as early as primary school at increasing rates. Children need help and support from their parents to succeed at school. Parents cannot fully understand the changes that have taken place in education in the last few decades unless they see it in action. Parents are encouraged to become

involved in identifying and advocating for educational improvements through participation in their local P&C Association.

In Public Schools there are legislated guarantees for the parent participation. Parents are entitled to receive complete information about their children's progress as well as the courses and educational programs on offer at the school. They also have a right to know and participate in the development of plans and policies for the running of the school. These include the schools approach to student welfare and discipline, finance, excursions and many others. These rights exist because the government has recognised the importance of parental involvement and understanding in the educational process. However, on their own, many parents do not know their rights or understand how to use them effectively. Active involvement and information sharing are available to every parent who joins their local P&C Association. Not only do P&C Associations support the school as a whole, but they are a great support for the parents who get involved.

How much time does it take?

P&C Associations are made up of busy and committed parents. The role of the P&C Association is unique to every school and is determined by the parents who attend meetings. Most P&C Associations meet once a month. As decisions can only be made by the agreement of a majority of members, meetings are an important part of P&C Association procedures members do not need to attend every meeting, however, regular attendance is the best way to find out what is happening. It will also ensure that decisions are carried out and funds are spent according to the wishes of the majority.

In addition to attending meetings, parents can participate in activities such as covering books for the library, help with reading programs, support with sporting functions and excursions, school finance and many more. The P&C Association hosts these activities and creates openings for parent participation in a school.

Many P&C Associations are establishing electronic communications networks, email news groups and telephone trees for those who can't attend meetings. These, together with the regular newsletter, ensure that parents are fully informed and their opinions are heard.

Why raise money?

Even though P&C Associations are not required to raise money, for many fundraising continues to be important part

of their activities. Each year in NSW parent volunteers raise around \$30 million in cash for government Schools and contribute an immeasurable amount in direct labour as well.

P&C Associations are often at the forefront of bringing advanced improvements to their school community. The associations benefit from being able to set a specific target such as improving the school environment through installing water tanks or enhancing the technological capabilities of a school through purchasing an interactive whiteboard. This allows parents to make positive changes on a quicker timetable than waiting for the government to provide these items.

Who can join a P&C Association?

The P&C Association is open to everyone: parents, caregivers, grandparents, teachers and members of the whole community. By working together, people who care can make a difference.

Crucially P&C Associations are a window on a child's education. Participation in the education process is one of the best expressions of support you can give your child. It has the greatest impact on children's engagement with schooling and educational success.

How do I find out more?

Ask your school principal for the time and place of your school's regular P&C Association meeting and contacts for the P&C Association Executives.

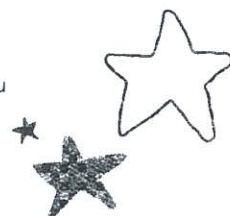
What is the P&C Federation?

The Federation of Parents and Citizens Association of NSW is the state level organisation for P&C Associations. All P&C Associations are eligible to be members of P&C Federation and this provides public liability insurance cover for P&C Association run activities, access to the regular publications of the P&C Federation.

For more information about meeting practice, insurance, speakers and parent support please contact:

Federation of Parents and Citizens Association of NSW

Postal Address:
Locked Bag 40
Granville NSW 2142
Phone: 1300 885 982
Fax: 1800 655 866
Email: mail@pandc.org.au
Website: www.pandc.org.au



CLOTHING POOL PRICES

New Clothing:

| | |
|------------------------|---------|
| Hats | \$8.00 |
| New Sports Polo Shirts | \$26.00 |
| New School Jackets | \$55.00 |
| Girls Winter Uniform | \$48.00 |
| Girls Summer Uniform | \$37.00 |

Second Hand Clothing:

Second hand clothing will be \$5.00 a piece

Girls Uniforms: Summer & Winter
School Shirts
Sports Track Suit Tops
Sports Track Suit Pants
Sports Shirts
Sports Skirts
Sports Pants
Ties

Second hand school jackets will be \$25.00 a piece

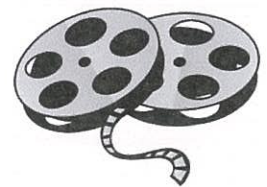
FREE

COMMUNITY MOVIE NIGHT



at

SOMERTON PUBLIC



TIME: 5:30PM

DATE: THURSDAY, 4TH JUNE 2015

WHAT TO BRING: YOURSELF

FAMILY MEMBERS, and FRIENDS.

FOOD: SAUSAGE SIZZLE and DRINK

MOVIE: ????

Come along and share a fun time and wear your PJ's.

RSVP: Joy Wilson on 0448825953 by Monday, 1st June 2015

